

ASUS Power 4 Gear

User's Guide

Contents

- Chapter 1 ASUS Power 4 Gear 1
 - 1.1 Introduction 1
 - 1.2 How to use Power 4 Gear 1

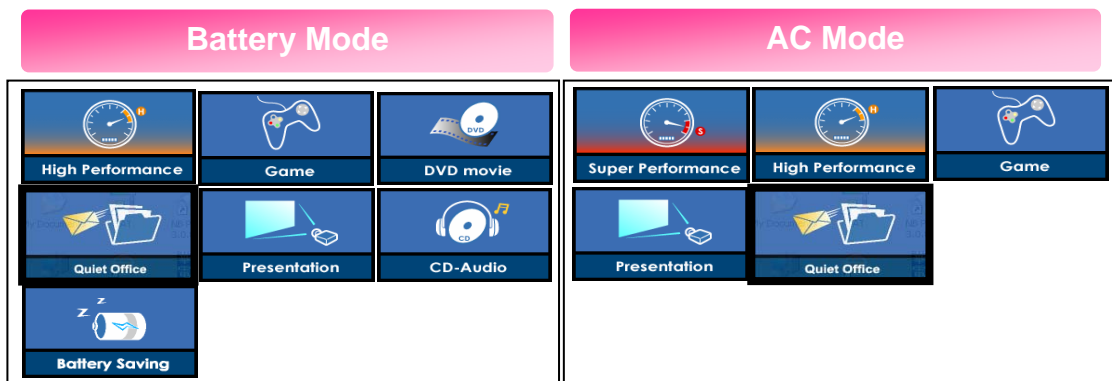
Chapter 1 ASUS Power 4 Gear

1.1 Introduction

ASUS Power 4 Gear can provide an easy way to control the power scheme and power setting of your Notebook.

Power 4 Gear will adjust the panel brightness and CPU frequency to expand the battery life.

Power 4 Gear has total 8 scenarios: Super Performance, High Performance, Game, DVD movie, Presentation, Quiet Office, CD Audio, and Battery Saving.



Note: “Presentation” mode can auto detect projector and select the suitable resolution.



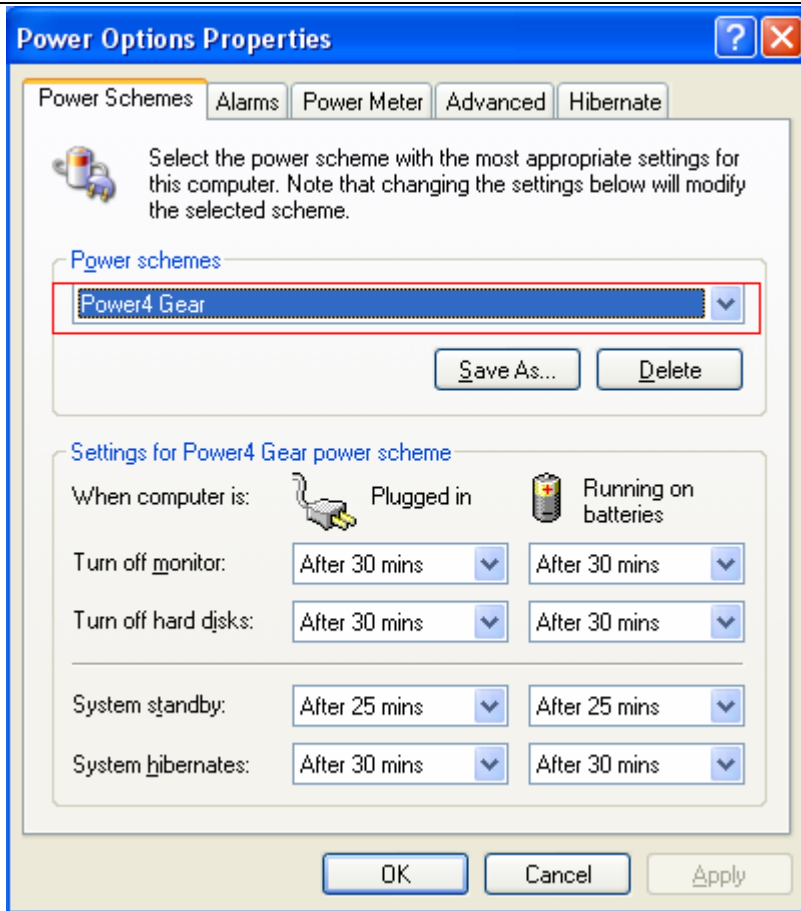
Note: if you want to decrease the un-necessary noisy, you can select “Quiet Office” mode.



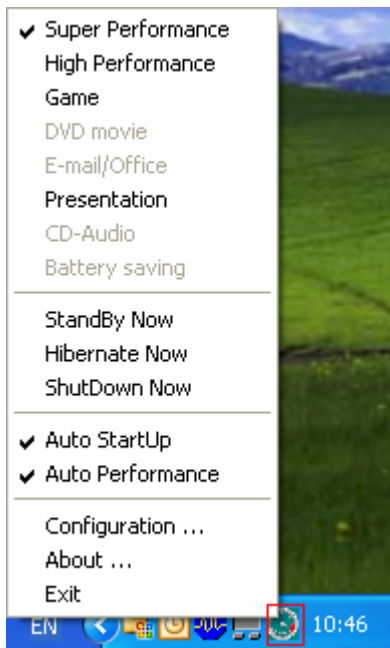
Note: total 8 scenarios, you can adjust the LCD panel brightness and system setting to save more power to expand the battery life.

1.2 How to use Power 4 Gear

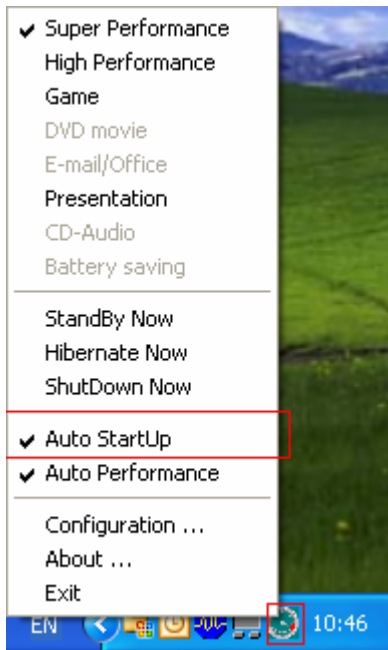
System will auto set “Power 4 Gear” as power scheme after each reboot if ASUS Power 4 Gear has been installed.



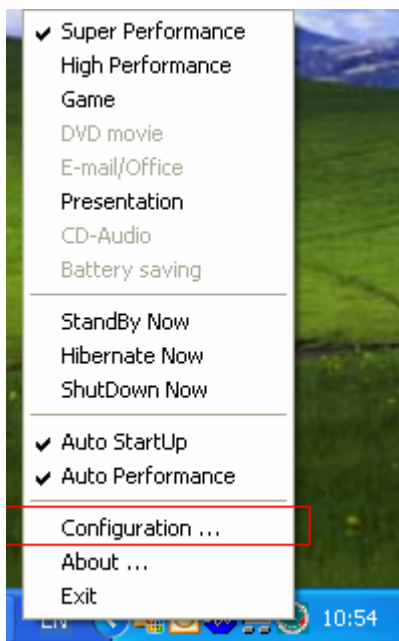
You can manually select or change Power 4 Gear to different modes by the instant key or its user interface control panel.

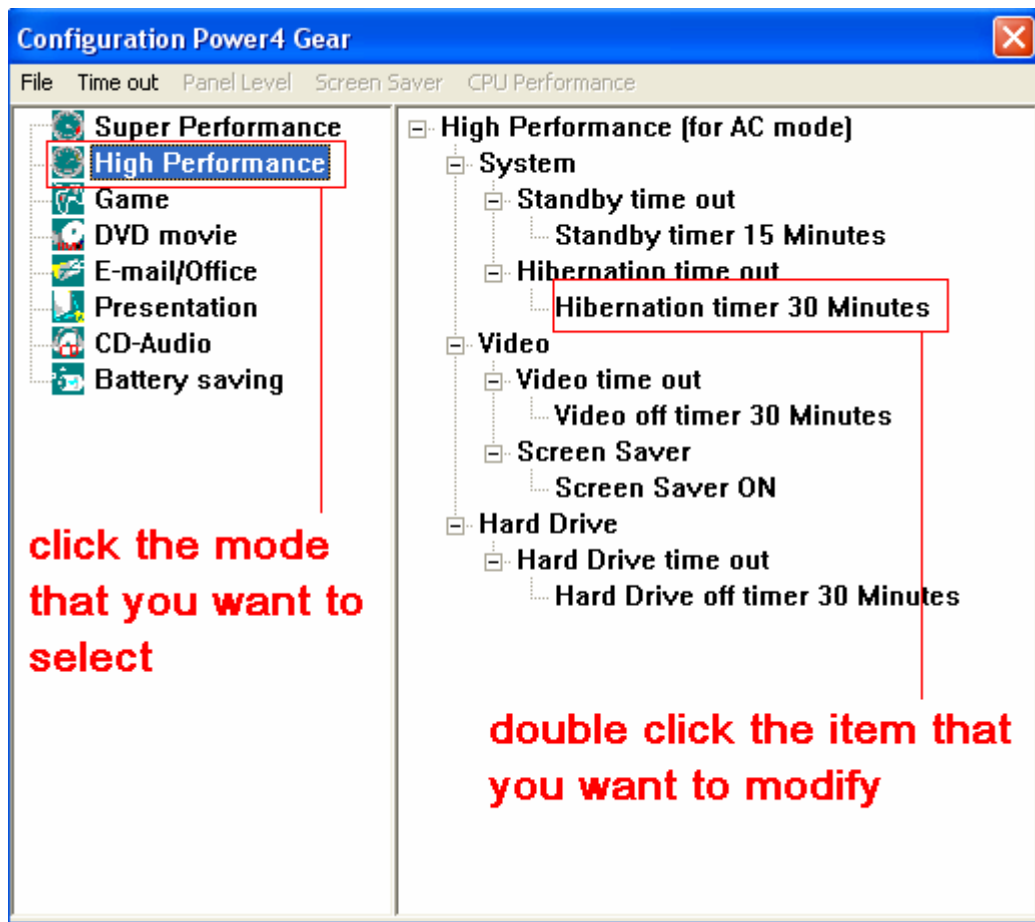


You can select whether you need to auto load Power 4 Gear after system startup by enabling or disabling “Auto StartUp”.

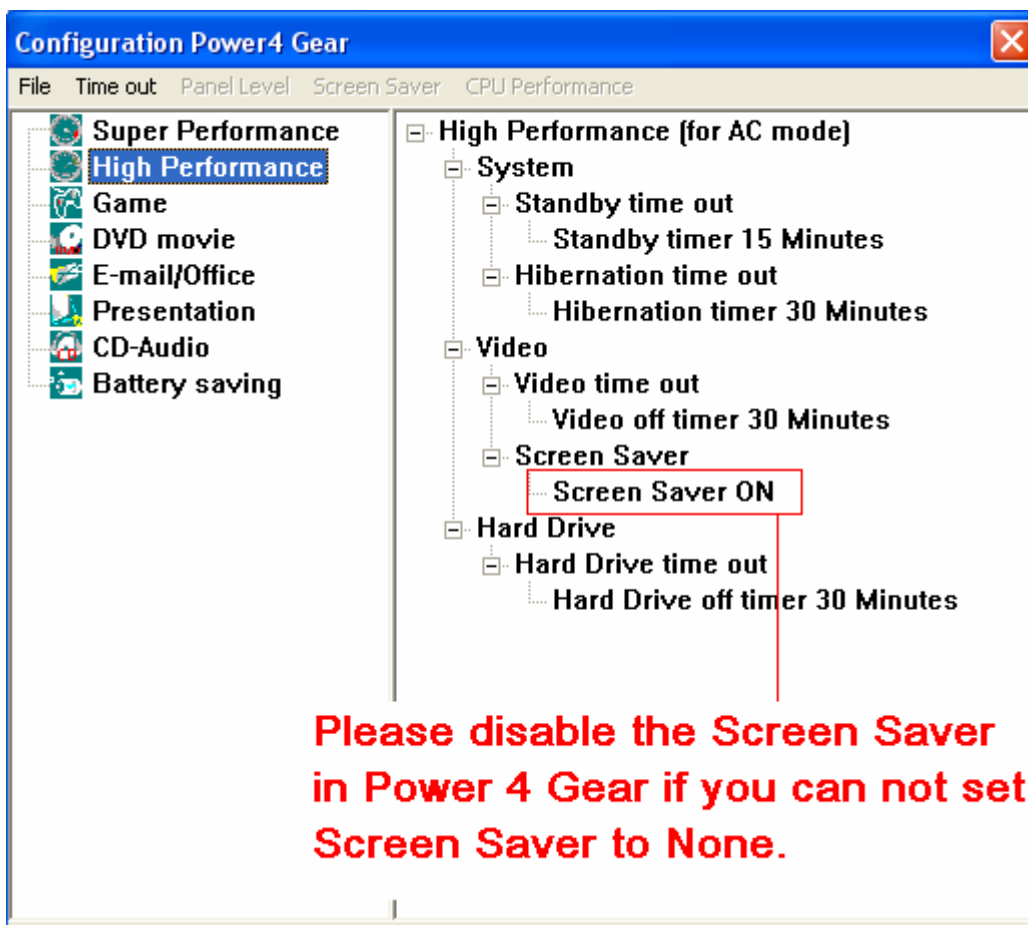


You can click “Configuration” to enter the configuration interface of Power 4 Gear.





Please disable the Screen Saver in Power 4 Gear if you can not set Screen Saver to none.



Battery saving mode can provide a configuration to expand your battery life.

The screenshot shows the 'Configuration Power4 Gear' window with the 'Battery saving (for DC mode)' mode selected. The left sidebar lists various power modes, with 'Battery saving' highlighted. The main pane displays the following configuration details:

- Battery saving (for DC mode)**
 - System**
 - Standby time out: Standby timer 2 Minutes
 - Hibernation time out: Hibernation timer 3 Minutes
 - CPU Performance: Performance level 25%
 - Video**
 - Panel Light: Brightness level 13%
 - Video time out: Video off timer 1 Minute
 - Screen Saver: Screen Saver OFF
 - Hard Drive**
 - Hard Drive time out: Hard Drive off timer 3 Minutes

Battery saving mode can provide a configuration to expand your battery life